

Report D&C

**Number of OHDEN Checkins by District and County by Month**

Note: data are normalized to 4 net sessions per month

2021		Jan	Feb	Mar	Apr	May	Jun	Jul	Aug	Sep	Oct	Nov	Dec
District	County												
1	Lucus									0.8			
	Wood												
	Ottawa												
	Erie								0.8	3.2	2		
	Sandusky												
	Seneca			0.8	1					3.2	4		
	Huron	2	1				0.8		1.6	5.6	1	1.3	1.6
	Hancock					1							
	Wyandot												
	Hardin												
2	Williams												
	Fulton												
	Defiance	4	4	4	3	2	3.2	4	3.2	5.6	4	3.9	4
	Henry												
	Paulding	1		1.6	3	3	3.2	4	1.6	2.4	3	1.3	4
	Putnam												
	Van Wert												
	Allen												
3	Mercer												
	Auglaize												
	Shelby		1	0.8	1								
	Logan												
	Darke	3											4
	Miami	1	1	0.8	1	1	0.8	1		2.4	1	1.3	4.8
	Champaign					1		3	4		1		
	Preble	4	3	4	4	4	2.4	4	4	4	3	3.9	3.2
4	Montgomery	4	4	3.2	4	3	4	3	3.2	2.4	4	2	4.8
	Clark												
	Greene	8	7	10	10	10	5.6	4	4	3.2	5	5.2	6.4
	Butler												
	Warren												
	Clinton		1	0.8	3	3	1.6	2	3.2	3.2	3		0.8
	Hamilton												
	Clermont												
5	Brown												
	Highland												
	Adams												
	Summit												
	Portage	3	4	2.4	2		0.8		0.8		2	1.3	3.2
	Trumbull												
5	Stark				1					0.8	2	1.3	0.8
	Mahoning						3.2		2.4	8	4	7.8	1.6
	Columbiana	6	4		1					7.2	6	7.8	5.6
	Carroll												

Report D&C

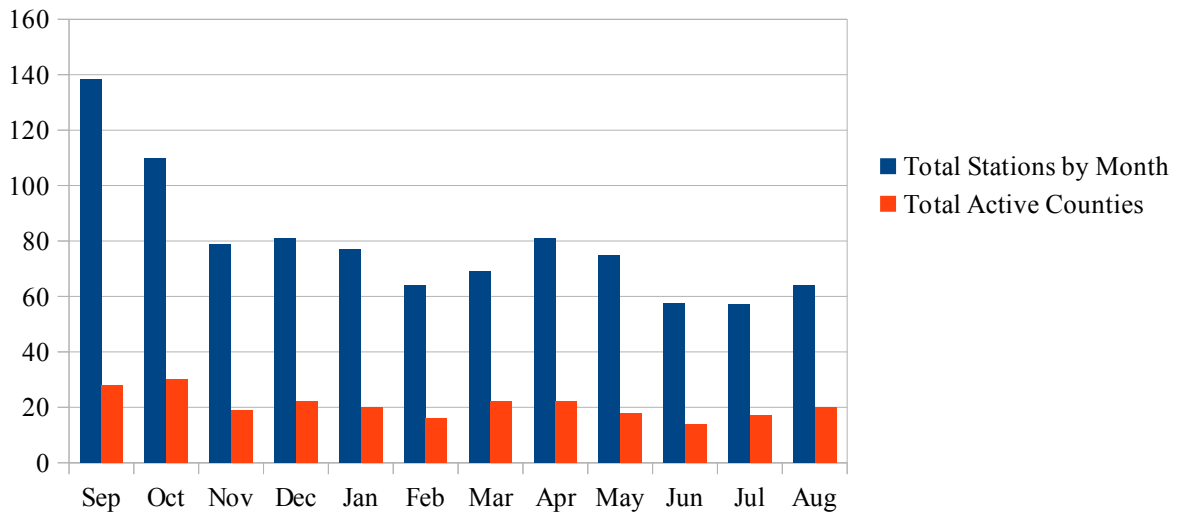
Number of OHDEN Checkins by District and County by Month													
Note: data are normalized to 4 net sessions per month													
2021		Jan	Feb	Mar	Apr	May	Jun	Jul	Aug	Sep	Oct	Nov	Dec
District	County												
6	Crawford												
	Richland			1.6	1			1		4.8	1		
	Ashland												
	Wayne												
	Morrow			1.6	3					4	3	1.3	
	Holms												
7	Marion												
	Knox												
	Union												
	Dalaware	3	4	3.2	4	3	4	4	4	4	3	5.2	3.2
	Licking	4	3	4	5	4	2.4	5	4	5.6	8	3.9	0.8
	Madison												
	Franklin			2.4	3	4	2.4	3	4	8	6	3.9	0.8
	Fairfield					1							
	Fayette												
Pickaway													
8	Ross												
	Hocking												
	Perry												
	Vinton												
	Athens	2	4	2.4	3	2	3.2	2	2.4	2.4	3		0.8
	Pike									4	2		
	Jackson												
	Gallia									1.6	1		
	Meigs	7	6	4.8	6	7	6.4	5	6.4	4	8	6.5	8
	Scioto												
Lawrence													
9	Tuscarawas												
	Harrison												
	Jefferson	6	8	6.4	5	8	4.8	6	3.2	5.6	5	5.2	8
	Coshocton	4	3	5	9	11	4.8	4	7.2	16	12	7.8	6.4
	Guernsey												
	Muskingum												
	Belmont												
	Morgan												
	Noble	2		0.8			0.8		1.6	4	1		
	Monroe			0.8	1	2	0.8			0.8	3		
Washington	2						1	0.8	2.4	1		4	
10	Lorain	2								2.4			
	Medina									0.8			
	Cuyahoga	3		0.8						5.6	3	3.9	2.4
	Lake												
	Geauga												
	Ashtabula												
n/a	Outside Stations	2	4	4	4	3	1.6	1		3.2	3	3.9	0.8

Report D&C

Number of OHDEN Checkins by District and County by Month													
Note: data are normalized to 4 net sessions per month													
2021		Jan	Feb	Mar	Apr	May	Jun	Jul	Aug	Sep	Oct	Nov	Dec
District	County												
n/a	Outside Misc.	4	2	3	3	2	0.8		1.6	7.2	2		0.8
	<b>Total by Month</b>	77	64	69.2	81	75	57.6	57	64	138.4	110	78.7	80.8
	<b>Total Active Co. (&gt;= once / mo.)</b>	20	16	22	22	18	14	17	20	28	30	19	22
Note: Outside Stations are those outside Ohio but actively involved with OHDEN.													
Outside Misc. are those outside Ohio that may occasionally check in.													

Total Stations and Active Counties

by Rolling Month



August 2021 had a slight uptick in both active counties and total stations, normalized to a 4-session month.

Net management has set sights on fall to reinvigorate a net operational training program.

A perennial problem for OHDEN is the lack of station operators willing to act as net control stations.